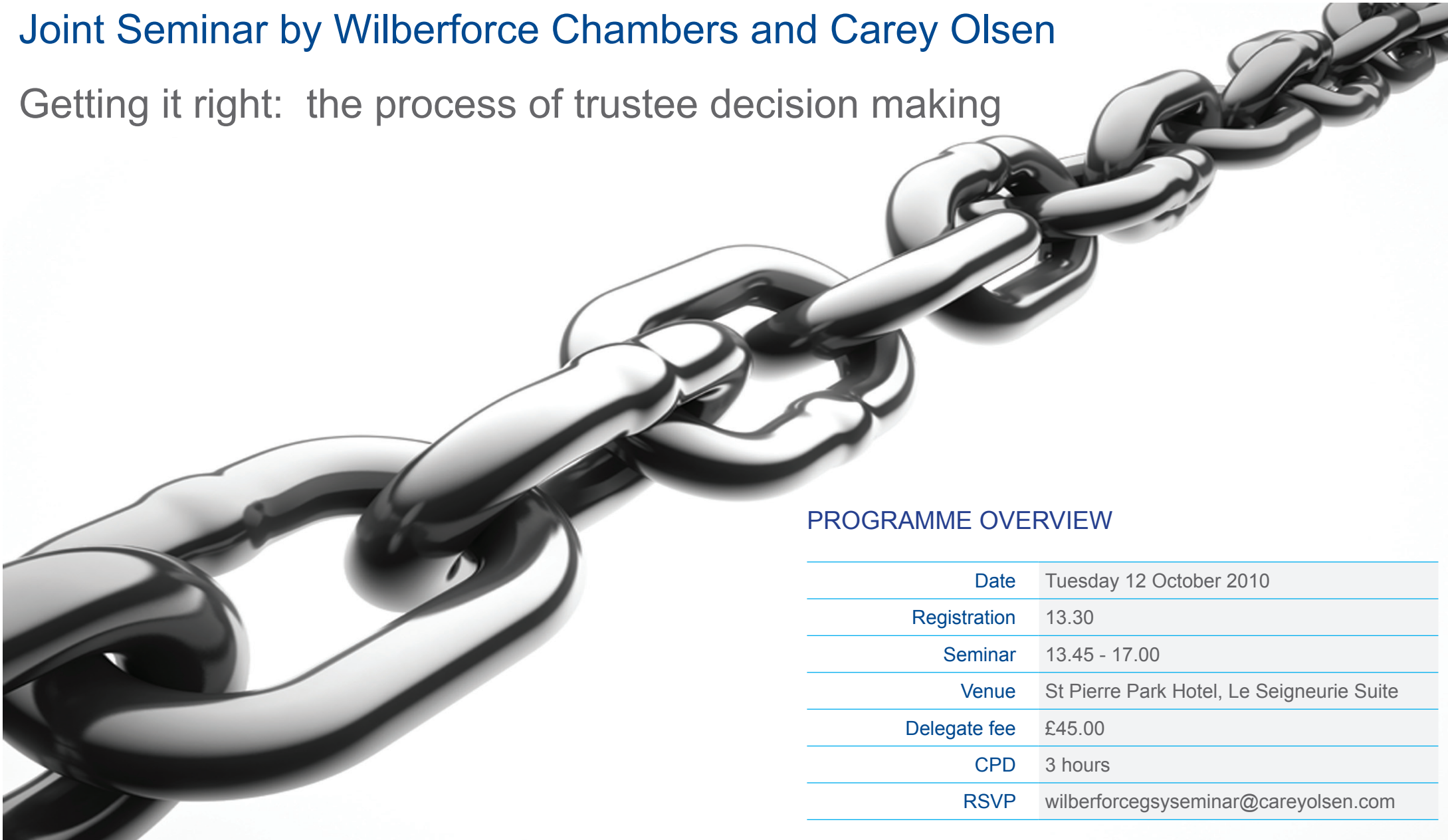


## Joint Seminar by Wilberforce Chambers and Carey Olsen

Getting it right: the process of trustee decision making



### PROGRAMME OVERVIEW

Date	Tuesday 12 October 2010
Registration	13.30
Seminar	13.45 - 17.00
Venue	St Pierre Park Hotel, Le Seigneurie Suite
Delegate fee	£45.00
CPD	3 hours
RSVP	<a href="mailto:wilberforcegssystemar@careyolsen.com">wilberforcegssystemar@careyolsen.com</a>



## INTRODUCTION

Following the great success of their joint event last year, the Members of Wilberforce Chambers and the Partners of Carey Olsen are delighted to announce that once again, they are combining to present an interactive seminar on a topical area of trust law and practice. Last year saw us look at the areas of trust administration most affected by the economic conditions in the wake of the credit crunch. This year we have chosen to focus upon how trustees go about making proper decisions, something which they do all the time, but which is now very much under the spotlight given for instance, the serious challenges currently being made to the rule in Hastings Bass, principally by HMRC.

This conference will be of interest to anyone involved in trust administration and practice, from directors of trust companies to advisers, such as lawyers and accountants. Attendees should have a basic working knowledge of trust law and practice as, like the event last year, the speakers will be focusing on the most current developments in the law affecting the trustee decision making process.

The format this year will be very different from that at the last event. After two introductory sessions, dealing respectively with making and attacking trustee decisions, the audience will break into two groups, with each group considering what will amount to the same set of facts, one from the point of view of defending and the other from attacking, a decision based on those facts. To conclude the event, the two groups will re-convene and have the opportunity to present their respective attack and defence of the decision in the forum of a mock tribunal, which will include the presentation of arguments from counsel on both sides, but also have scope for comments from the floor. The final stage will be for the acting Tribunal chair to decide the matter on the strength of what he has heard from both groups.

We are very pleased to be running the event in London this year, as well as in both Jersey and Guernsey. Whilst they are each separate jurisdictions, the laws of Jersey, Guernsey, England and Wales are quite similar in the way they approach the subject of trustee decisions, and we very much hope that by having the seminars in each jurisdiction, the content of each will inform the others, and give the audience the opportunity to learn from opinions elsewhere.

## About Wilberforce Chambers

One of the UK's leading commercial chancery and business law sets of chambers, and involved in some of the most intellectually demanding and commercially significant matters undertaken by the Bar today, Wilberforce Chambers has long been regarded as the leading chambers in the field of trusts, probate, taxation & other private client work. This reputation is based on the unique combination of skills offered by members of Chambers, who combine the highest standards of intellectual ability and advocacy skills with the commercial and practical approach which clients require, as well as offering a collective expertise based on vast experience. Wilberforce Chambers offers barristers of all levels of seniority unparalleled opportunities to assemble in-house teams. Chambers is committed to offering the highest quality service to all its clients. Wilberforce is also well known in the Channel Islands for the work it does on offshore matters. This conference therefore represents a unique opportunity to hear some of the Barristers who practice in these areas speaking locally in a public forum.

## About Carey Olsen

Carey Olsen is one of the largest full-service law firms in the Channel Islands, with over 140 lawyers in our offices in Guernsey, Jersey and London. The firm offers clients the full range of legal services, including corporate and commercial, funds, banking and finance, trusts and fiduciary, commercial and residential property, restructuring, employment, litigation and dispute resolution.

Carey Olsen's Fiduciary Law Group comprises the largest single group of lawyers within a Channel Island law firm, dedicated to working on trust and trust-related matters. The Group extends across Guernsey, Jersey and London and offers a wide range of specialist advice on contentious and non-contentious trust and probate matters. In particular, the Group is well known for its involvement in many of the leading trust cases heard and decided in either Island in recent times and for its specialist yet pragmatic approach to fiduciary matters.

## PROGRAMME OVERVIEW

13.30 - 13.45	Registration
13.45 - 14.00	Welcome John Greenfield, Managing Partner Carey Olsen
14.00 - 14.45	Lecture One: How should a trustee make decisions? Speaker: Paul Buckle, Carey Olsen
14.45 - 15.30	Lecture Two: Attacking a trustee decision Speakers: Michael Furness QC and Judith Bryant, Wilberforce Chambers
15.30 - 15.45	Coffee Break
15.45 - 16.30	Workshop Sessions: Group 1: Making a decision - Carey Olsen Group 2: Attacking a decision - Wilberforce Chambers
16.30 - 17.00	Plenary - Mock Trial Speaker: Robert Ham QC, Wilberforce Chambers
17.00 - 19.00	Drinks & Canapés

## REGISTRATION

RSVP	wilberforcegssystem@careyolsen.com
Attendance fee	£45.00
Date	Tuesday 12 October 2010
Registration	13.30
Seminar	13.45 - 17.00
Venue	St Pierre Park Hotel, Le Seigneurie Suite
CPD	3 hours
Contact	Anna Coombs Marketing and Events Coordinator  Carey Olsen, PO Box 98, Carey House, Les Banques, St Peter Port, Guernsey GY1 4BZ  Email: <a href="mailto:anna.coombs@careyolsen.com">anna.coombs@careyolsen.com</a>  Telephone: 01481 727272
Payment	Please make cheques payable to 'Carey Olsen'  Alternatively you may wish to pay by BACS transfer:  Account: Carey Olsen fees account Bank: Royal Bank of Scotland Interntional Sort Code: 16-20-29 Acc Number: 56239518 IBAN: GB64RBOS16202956239518 SWIFT: RBOSGGSP  Please quote "Seminar" with all payments

## SPEAKERS AND CONTRIBUTORS



**John Greenfield**, Managing Partner and  
Head of Litigation Group Guernsey  
Carey Olsen



**Robert Ham, QC**  
Wilberforce Chambers



**Russell Clark**, Partner  
Carey Olsen



**Michael Furness, QC**  
Wilberforce Chambers



**Paul Buckle**, Group Partner  
Carey Olsen



**Judith Bryant**  
Wilberforce Chambers